

1  $\mu$ m  
|  
|

Mag = 14.00 K X

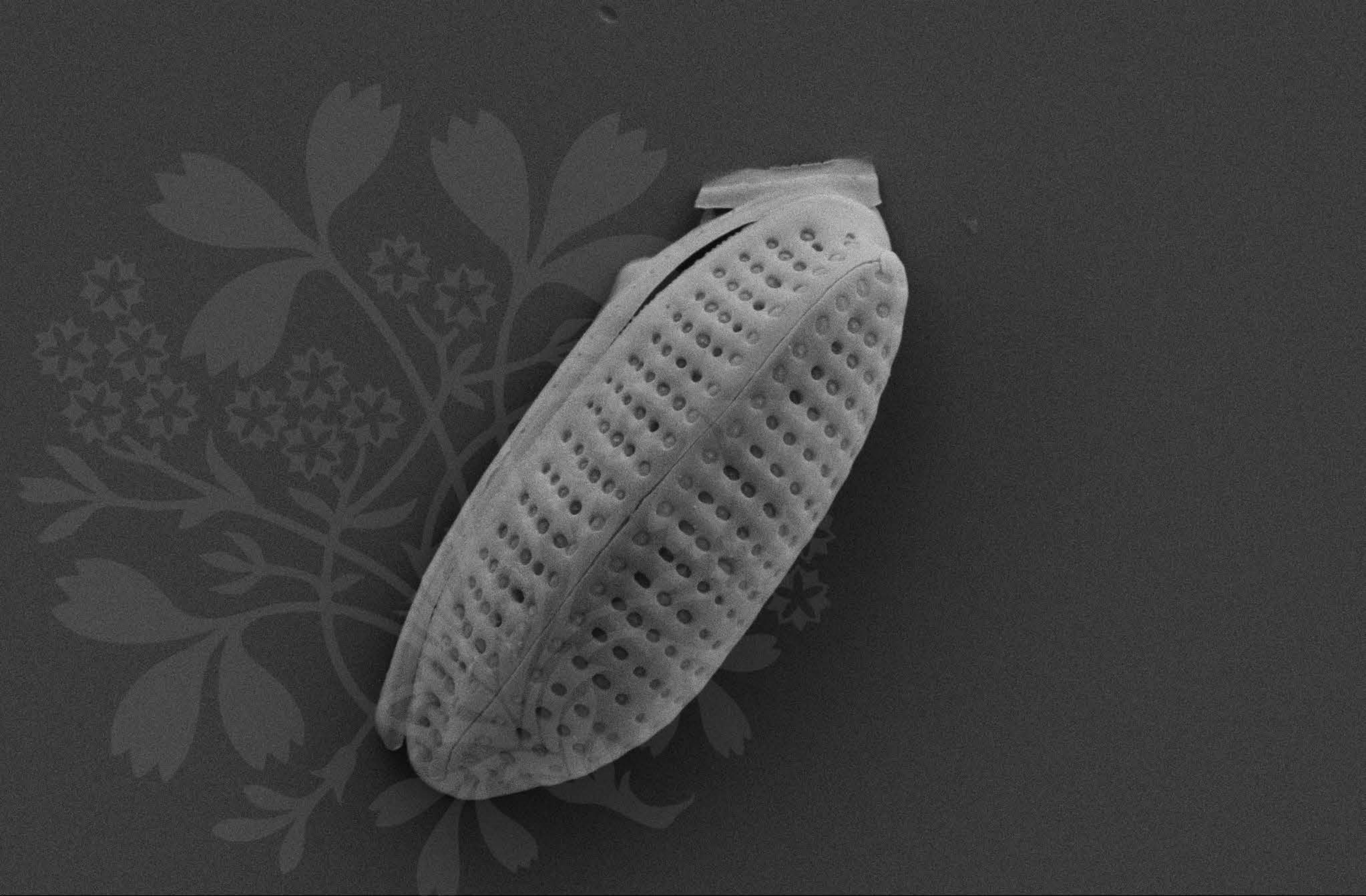
WD = 4 mm

EHT = 5.00 kV Signal A = SE2

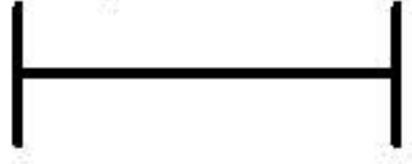
File Name = 05-L62.tif

Date :8 Aug 2011





1  $\mu$ m



Mag = 24.80 K X

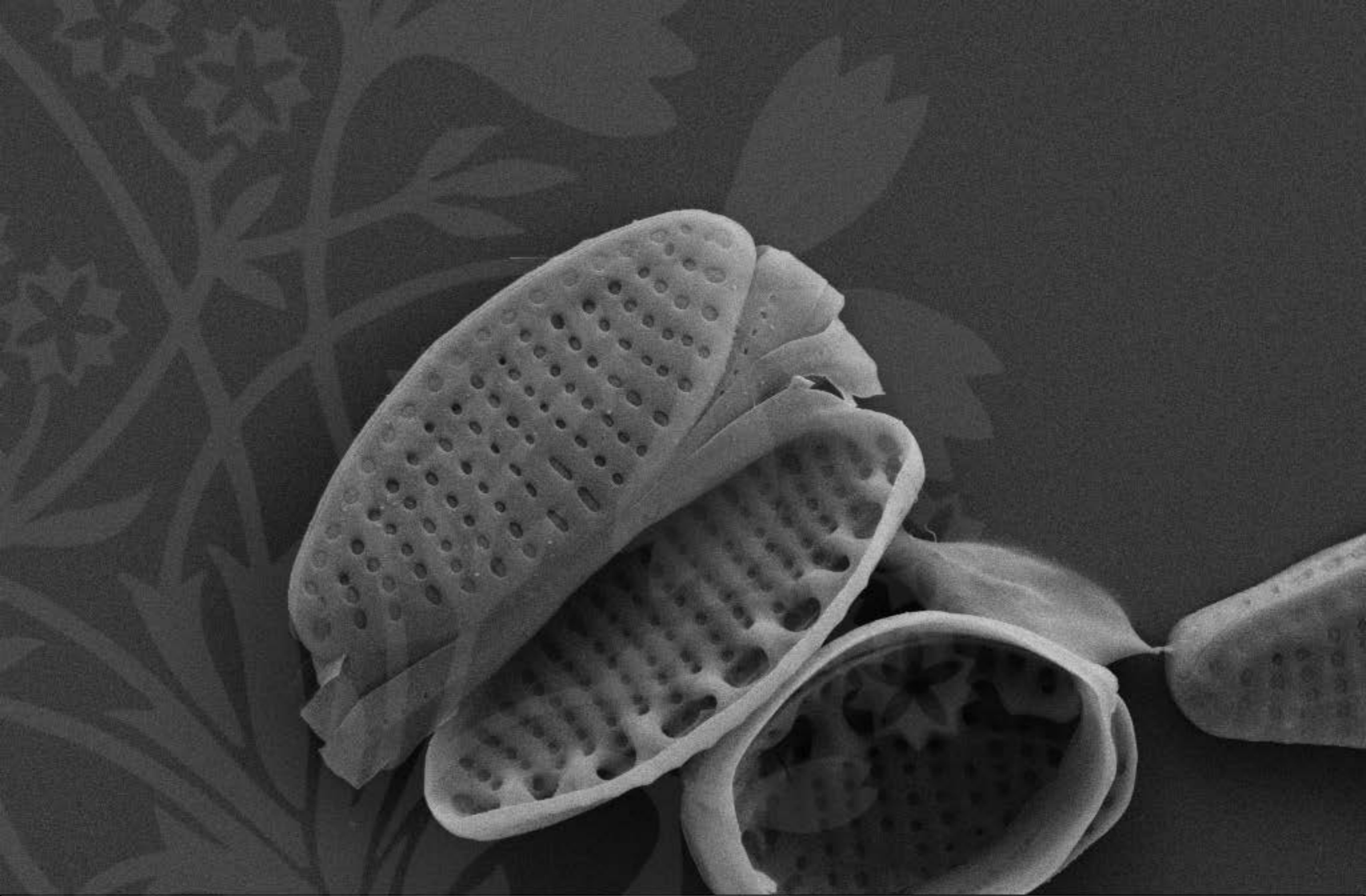
WD = 4 mm

EHT = 5.00 kV Signal A = SE2

File Name = 06-L62.tif

Date :8 Aug 2011





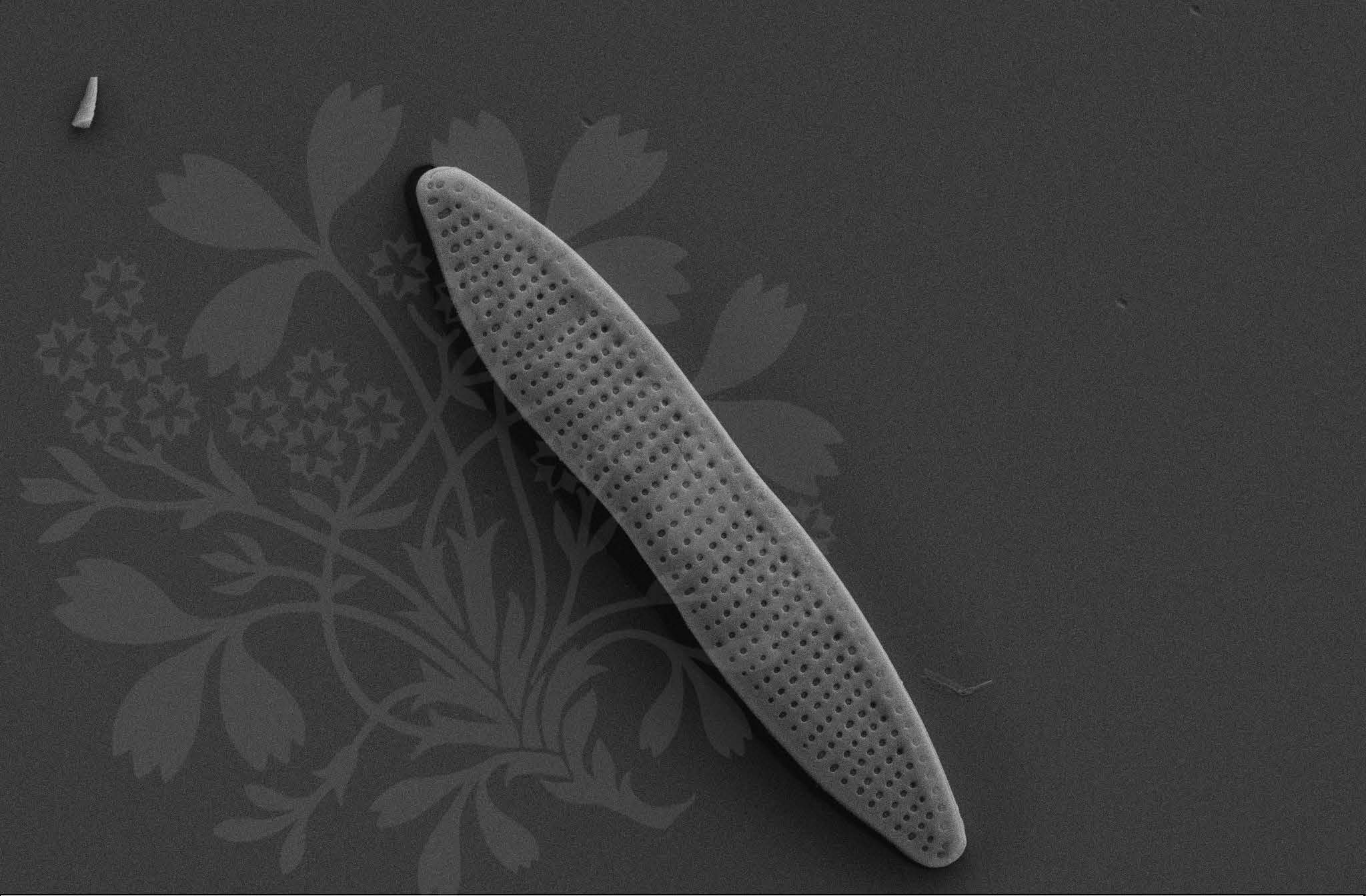
1  $\mu\text{m}$   
|-----|

Mag = 24.63 K X  
WD = 4 mm

EHT = 5.00 kV Signal A = SE2  
File Name = 07-L62.tif

Date :8 Aug 2011





1  $\mu$ m  
|  
|

Mag = 13.48 K X

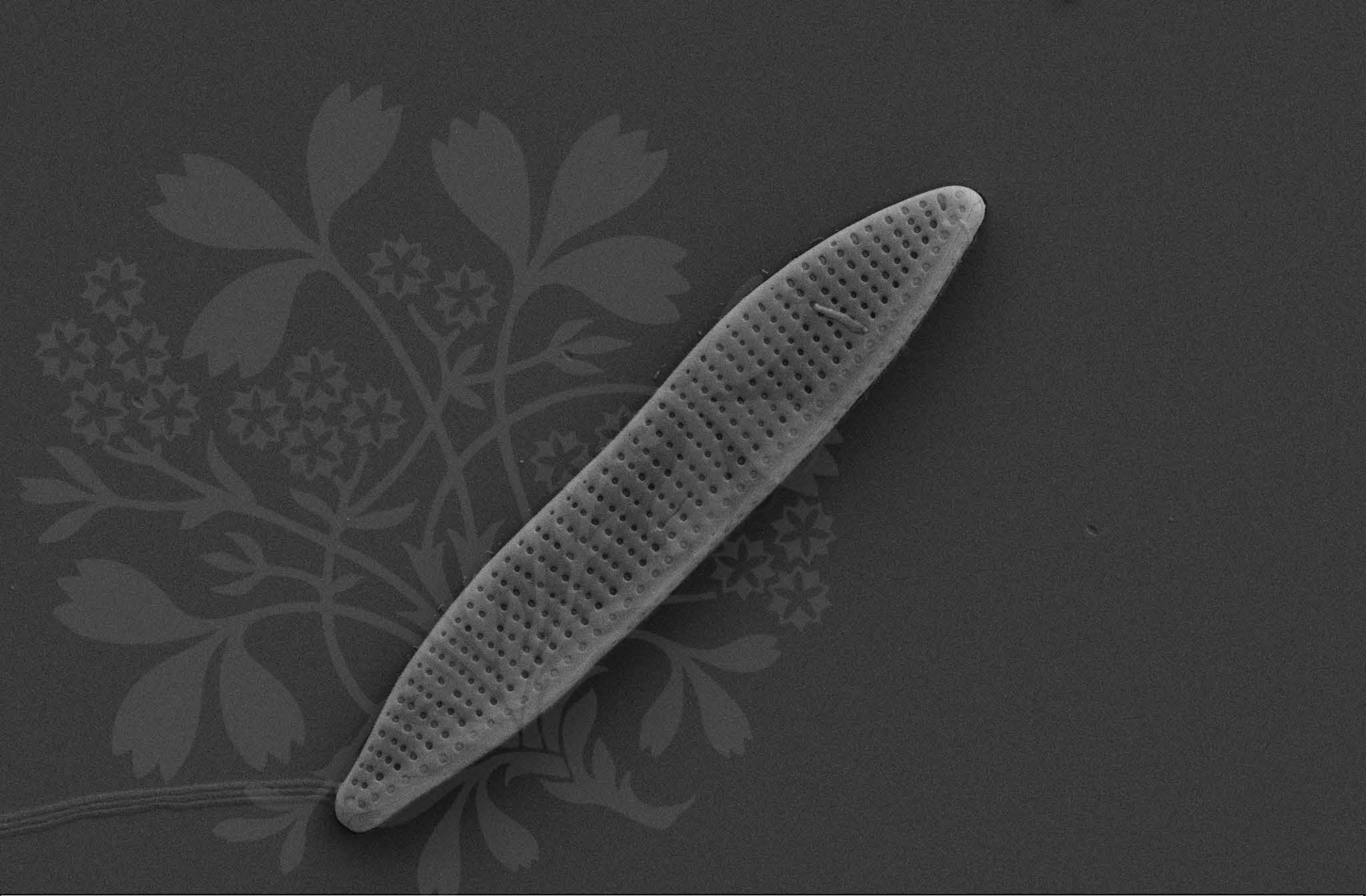
WD = 4 mm

EHT = 5.00 kV Signal A = SE2

File Name = 08-L62.tif

Date :8 Aug 2011





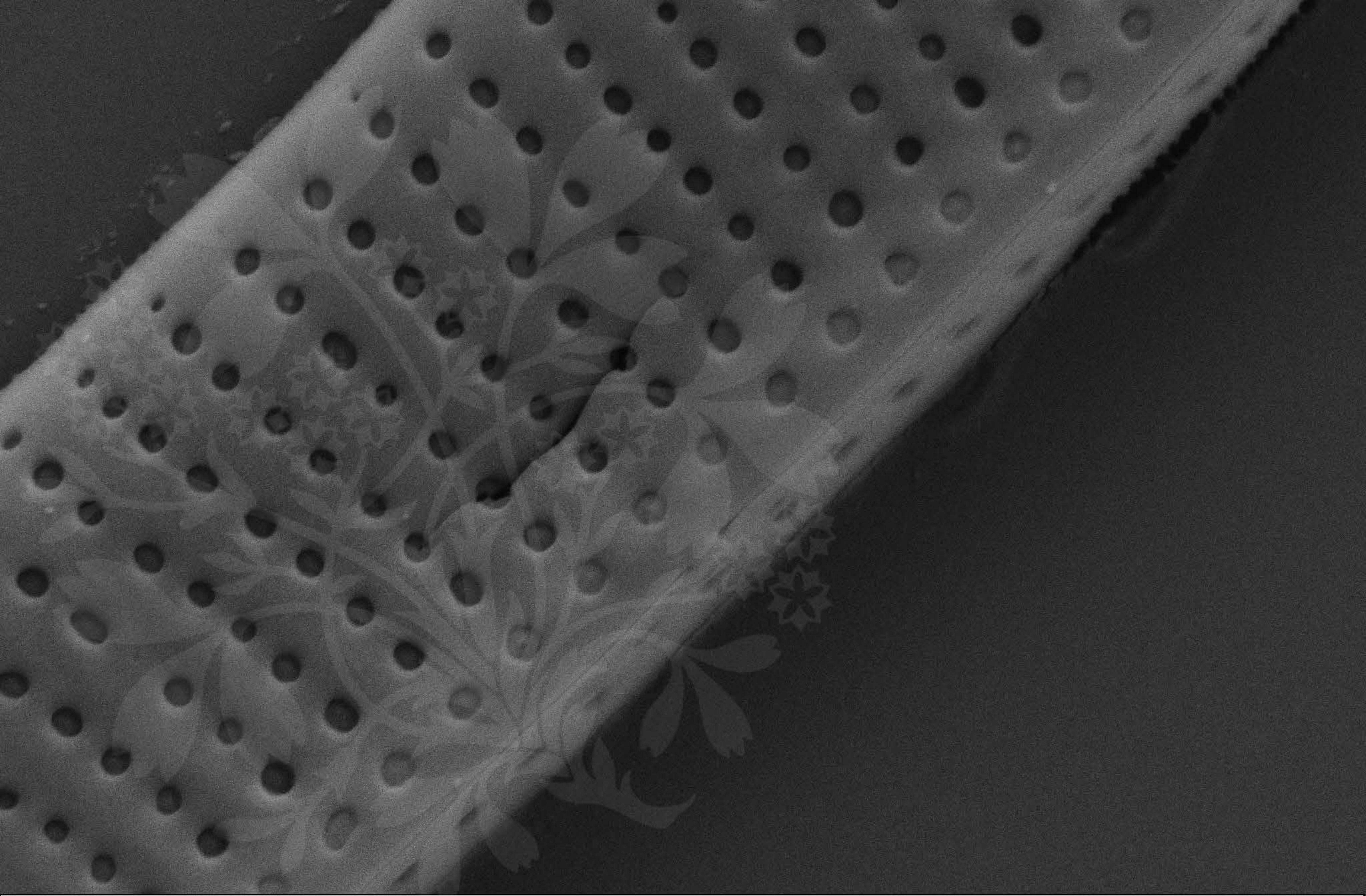
1  $\mu$ m  
|  
|

Mag = 13.50 K X  
WD = 4 mm

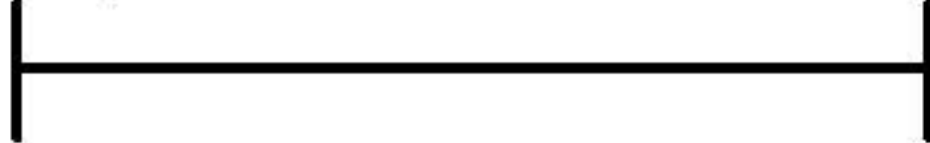
EHT = 5.00 kV Signal A = SE2  
File Name = 009-L62.tif

Date :8 Aug 2011





1  $\mu\text{m}$



Mag = 59.71 K X

WD = 4 mm

EHT = 5.00 kV Signal A = SE2

File Name = 010-L62.tif

Date :8 Aug 2011

